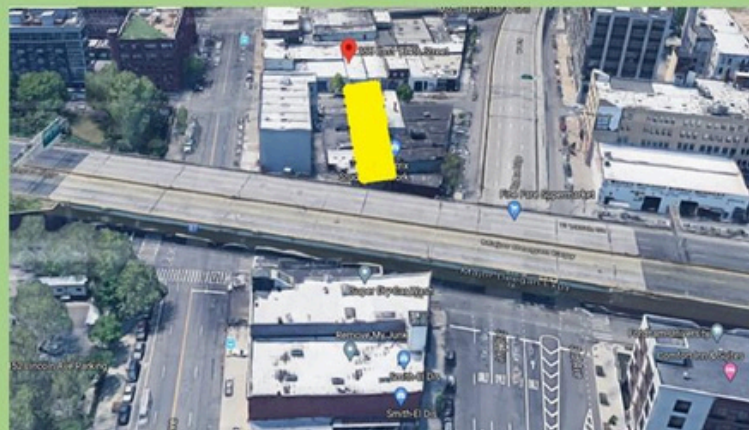
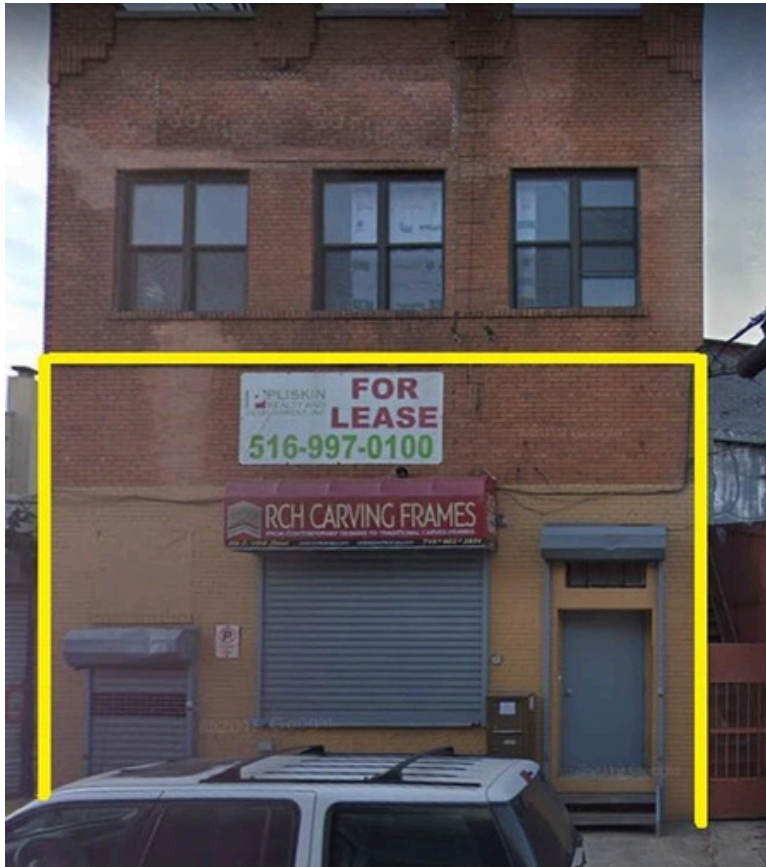




PLISKIN REALTY &
DEVELOPMENT, INC.
PLISKIN REALTY
MANAGEMENT, LLC.

FOR LEASE – 256 E 135th Street, Bronx, NY 10454



Type: (FLEX) Lite Manufacturing/Office/Loft
Unit Size: + 2,100 SF
Rent: Call for details
Area/Section: MOTT HAVEN
Availability: Immediate
+ 2,100 SF available in the Mott Haven section of the Bronx. The space, previously occupied by a high-end picture frame manufacturer, is conveniently located close to the 3rd Ave Bridge, Bruckner Blvd. and just off the Major Deegan Expressway. Highlights include a drive-up loading dock, tall ceilings, kitchen/break area, and a bathroom. Call for details.

For More Information Contact:
Michael DiBella,
Licensed Real Estate Salesperson
(516) 997-0100 ext. 0319– Office
(516) 864-6759 – Mobile
mdibella@pliskinrealty.com



PLISKIN REALTY &
DEVELOPMENT, INC.
PLISKIN REALTY
MANAGEMENT, LLC.
591 Stewart Ave., Suite 100 Garden City, NY 11530
www.pliskinrealty.com
PHONE: (516) 997-0100 FAX: (516) 997-7225

All information furnished is from sources deemed reliable, but no warranty or representation is made as to the accuracy thereof and same is submitted subject to errors, omissions, change of price, rental or other conditions, prior sale, lease or financing or withdrawal without notice.

591 Stewart Avenue • Suite 100 • Garden City, NY 11530
516-997-0100 • web: www.PliskinRealty.com • E-Mail: jpliskin@pliskinrealty.com