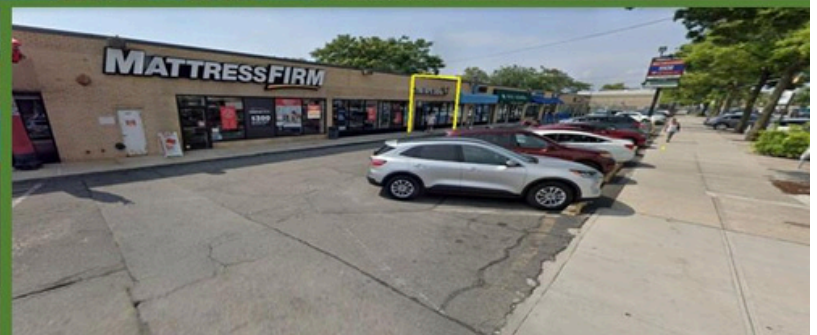




FOR LEASE: 1,400 SF with over 26 FEET of FRONTAGE!!
2152 Ralph Ave, Brooklyn, NY 11234



Type: *RETAIL (Whitman Plaza Shopping Center)*
Unit Size: ***+ 1,400 SF with 26 FT. of Frontage***
Rent: *Call for details*
Co and Neighboring Tenants: Mattress Firm, AT&T, MCU, Chase Bank, Metro PCS, TD Bank, Cold Stone Creamery, Chipotle, Duane Reade, Pearle Vision, Five Guys, Physical Therapy, Medical, Cleaners

For More Information Contact:

Michael DiBella, *Licensed Real Estate Salesperson*
 (516) 997-0100 ext. 0319- Office
 (516) 864-6759 - Mobile
mdibella@pliskinrealty.com

+ 1,400 SF available in the Whitman Plaza Shopping Center. Outstanding retail space on busy Ralph Ave.! Located between Avenue K and Avenue L, and directly across from the Georgetown Shopping Center. This center offers an exceptional retail opportunity along with convenient on site and street parking. Densely populated area with strong demographics and close to all! Call for additional details.



PLISKIN REALTY &
DEVELOPMENT, INC.
PLISKIN REALTY
MANAGEMENT, LLC.

591 Stewart Ave., Suite 100 Garden City, NY 11530
www.pliskinrealty.com
 PHONE: (516) 997-0100 FAX: (516) 997-7225

All information furnished is from sources deemed reliable, but no warranty or representation is made as to the accuracy thereof and same is submitted subject to errors, omissions, change of price, rental or other conditions, prior sale, lease or financing or withdrawal without notice.