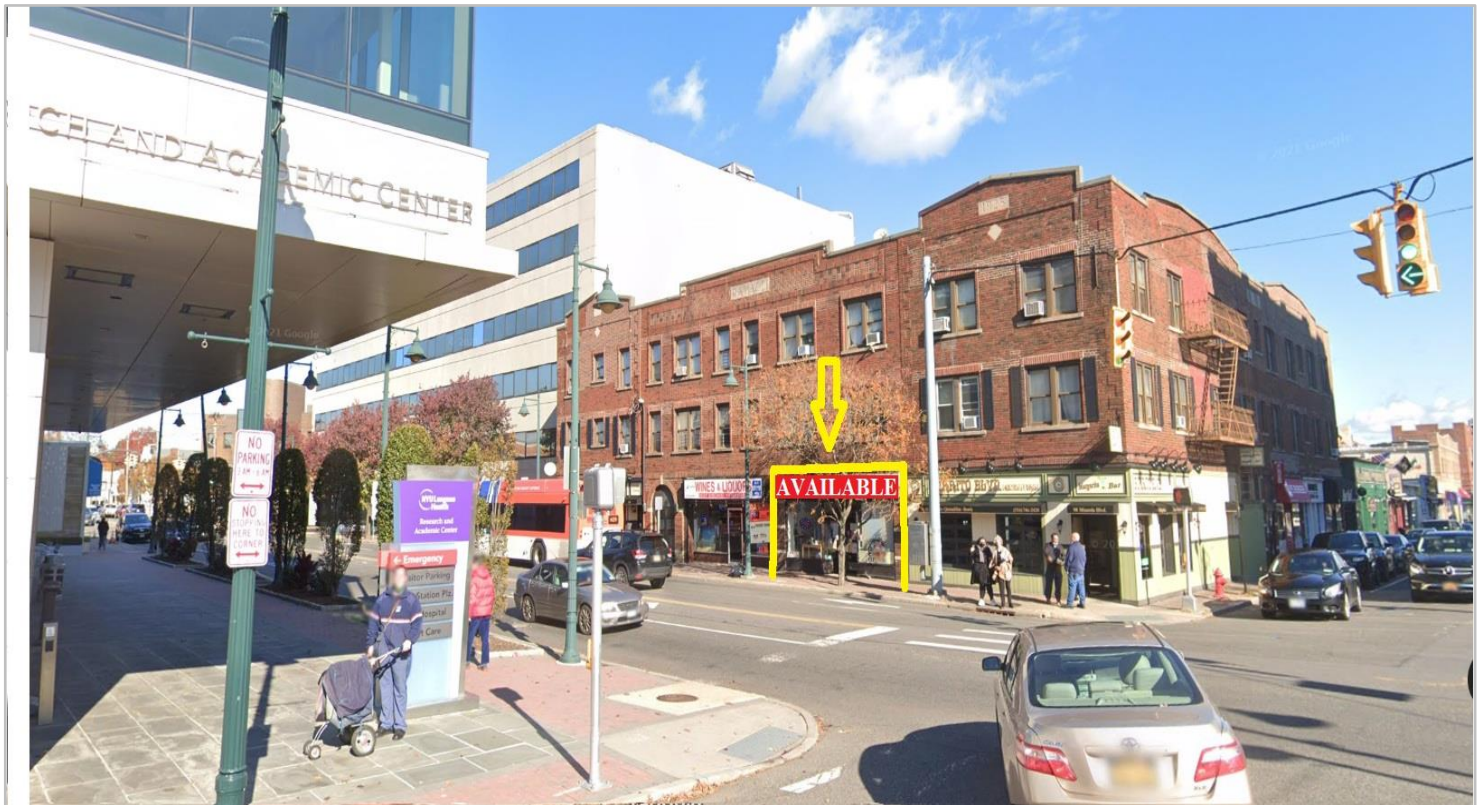


RETAIL SPACE FOR LEASE (Delivered as a Vanilla Box) **100 MINEOLA BLVD., MINEOLA NY 11501**



Type: **RETAIL**
Unit Size: **± 800 SF with 20 feet of frontage! + BASEMENT**
Rent: *Call for details*

Occupancy Available Immediately
Co and Starbucks, NYU LI School of Medicine, NYU
Neighboring Langone/Winthrop Hospital, Morgan Parc,
Tenants: Spghettini Restaurant, Franwin Pharmacy,
Subway, Wine & Liquor, Bagel Café & Deli, Burrito
Bld.

Brief Description: **DELIVERED AS A VANILLA BOX.** ± 800 SF plus basement with **20 feet of store frontage** available on busy Mineola Blvd. Located across from the NYU LI School of Medicine, Morgan Parc with 266 apartments, and one block from NYU Langone/Winthrop Hospital with almost 2,000 employees! **Heavy car and foot traffic.** Strong demographics and convenient to all! Call for additional details.

All information furnished is from sources deemed reliable, but no warranty or representation is made as to the accuracy thereof and same is submitted subject to errors, omissions, change of price, rental or other conditions, prior sale, lease or financing or withdrawal without notice.

For More Information Contact:
Michael DiBella
Licensed Real Estate Salesperson
(516) 997-0100 ext. 0319 – Office
(516) 864-6759 - cell
mdibella@pliskinrealty.com

1 mile 2 mile 3mile
2022 Population 23,446 82,235 198,433

ADT: 16,665