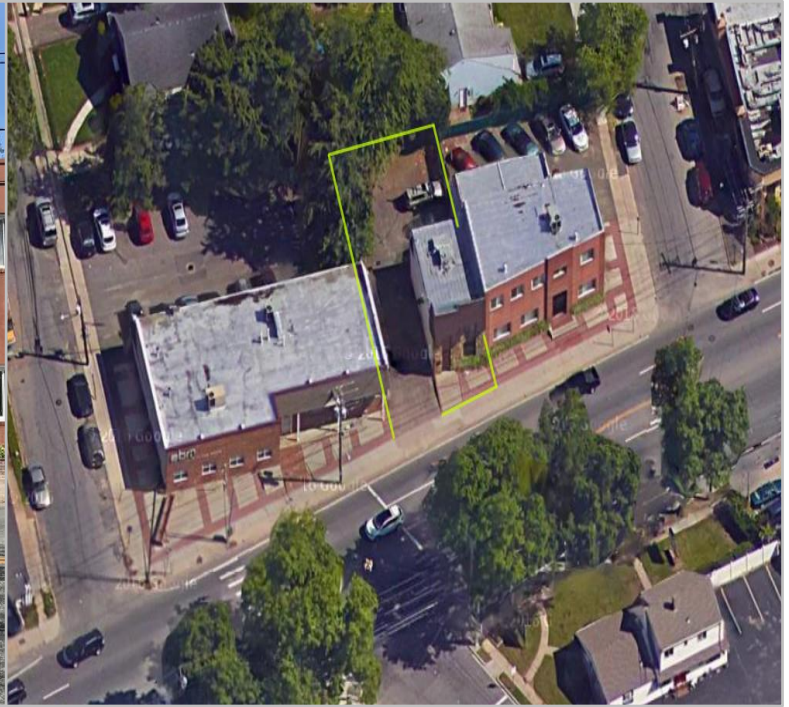


FOR SALE

835 Old Country Road, Westbury 11590



Type: Medical/Professional
Building Size: 2 floors – 1,500 SF
Lot Size: 0.086 Acres
Zoning: Business A (B-A) – Office Building
Year Built: 1978
R.E. Tax: \$13,903

± 1,500 SF office/medical building on Old Country Road. Full interior renovation! Great user building. Easy access to parkways. Call for additional information.

For More Information Contact:

Christopher Wierzbicki
(516) 997-0100 ext. 312 – Office
(516) 987-8355 – Mobile
christopher@pliskinrealty.com

Marvin Hartman
(516) 997-0100 ext. 309 – Office
mhartman@pliskinrealty.com