

## **Available for Lease – Plaza 200**

**231 & 255 Voice Road, Carle Place, NY 11514**



**Type:** Retail for Lease  
**Unit Size:** ±2,450 SF & ±7,500 SF  
**Price:** Call For Details  
**Co-Tenants** Planet Fitness, Hand & Stone, Fortunoff Bedding, Karako Suits, golfTEC, VanHeusen, Jersey Mike's  
**Area Tenants:** TJ Maxx, Big Lots, Party City, 7-Eleven, Toys R Us, Pier 1 Imports

±2,450 & ±7,500 SF unit available in Plaza 200 on busy Voice Road. Center of major retail hub. Ample on-site parking. Less than 1/4 mile from Roosevelt Field Mall. ADT of 41,000 vehicles.

**For More Information Contact:**

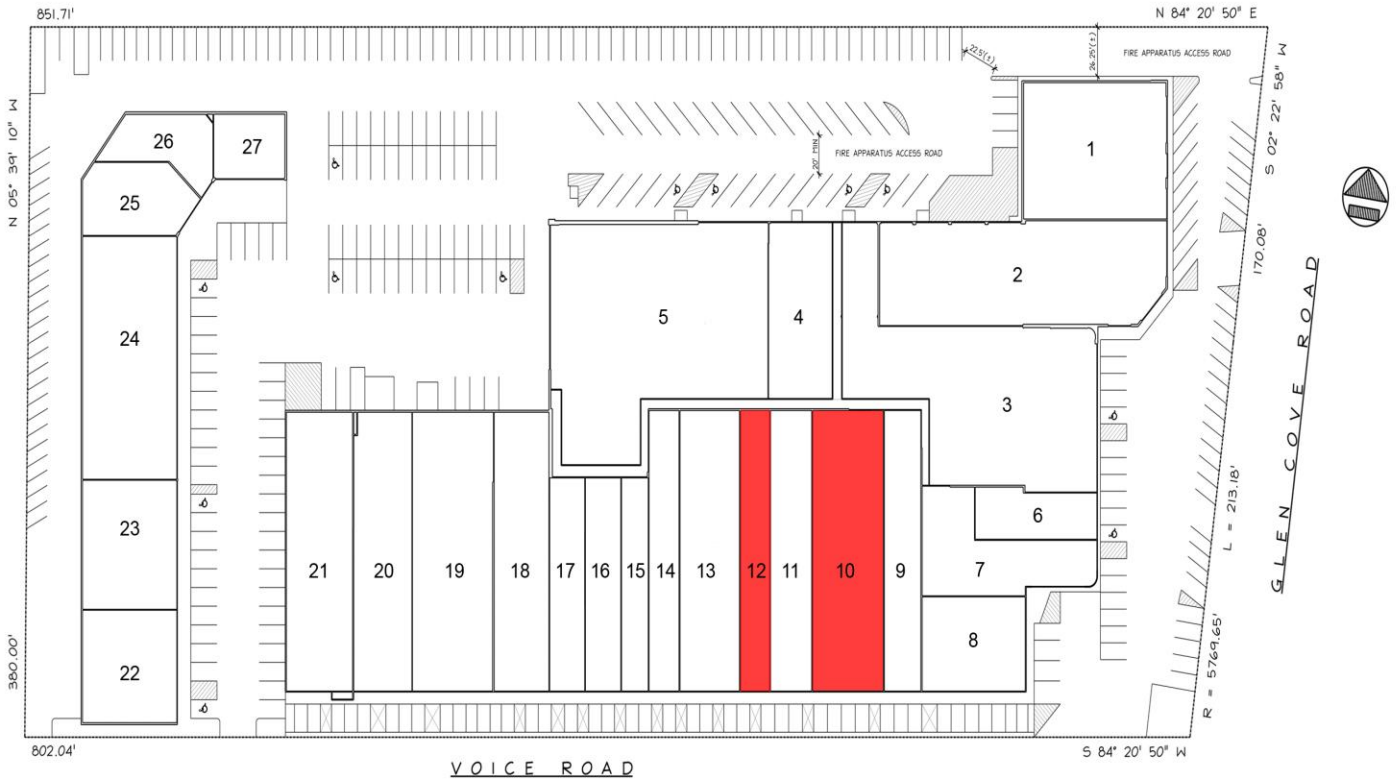
**Christopher Wierzbicki**  
 (516) 997-0100 ext. 312 – Office  
 (516) 987-8355 – Mobile  
 christopher@pliskinrealty.com

**Jeffrey Pliskin**  
 (516) 997-0100 – Office  
 jpliskin@pliskinrealty.com

All information furnished is from sources deemed reliable, but no warranty or representation is made as to the accuracy thereof and same is submitted subject to errors, omissions, change of price, rental or other conditions, prior sale, lease or financing or withdrawal without notice.



**PLISKIN  
REALTY AND  
DEVELOPMENT, INC.**  
*Knowledge. Service. Integrity.*



**SITE PLAN**

1. Bo Concepts	7,500 SF	10. Available	7,500 SF	20. Fabric Store	6,000 SF
2. Camille La Vie	11,000 SF	11. Martial Arts	4,500 SF	21. Marburn Curtains	6,500 SF
3. Eastern Mountain Sports	14,000 SF	12. Available	3,000 SF	22. Van Heusen Outlet	4,000 SF
4. Kick Boxing	4,100 SF	13. Karako Menswear	6,000 SF	23. Bikram Yoga	4,400 SF
5. Planet Fitness		14. Dinettes Plus	3,000 SF	24. Qzar	8,400 SF
Health Club	16,000 SF	15. Golf Tec	2,400 SF	25. Skin Treatments	3,000 SF
6. Dunkin Donuts	3,200 SF	16. Crossfit	2,600 SF	26. Greek Corner	
7. Empress Carpet	3,000 SF	17. Perfume Outlet	3,000 SF	Restaurant	2,000 SF
8. Corning	4,000 SF	18. Vanity Fair	6,000 SF	27. Schwartz Candy	1,800 SF
9. Butcher Block	3,500 SF	19. 99 Cent Store	8,100 SF		

591 Stewart Avenue • Suite 100 • Garden City, NY 11530

516-997-0100 • web: [www.PliskinRealty.com](http://www.PliskinRealty.com) • E-Mail: [jpliskin@pliskinrealty.com](mailto:jpliskin@pliskinrealty.com)