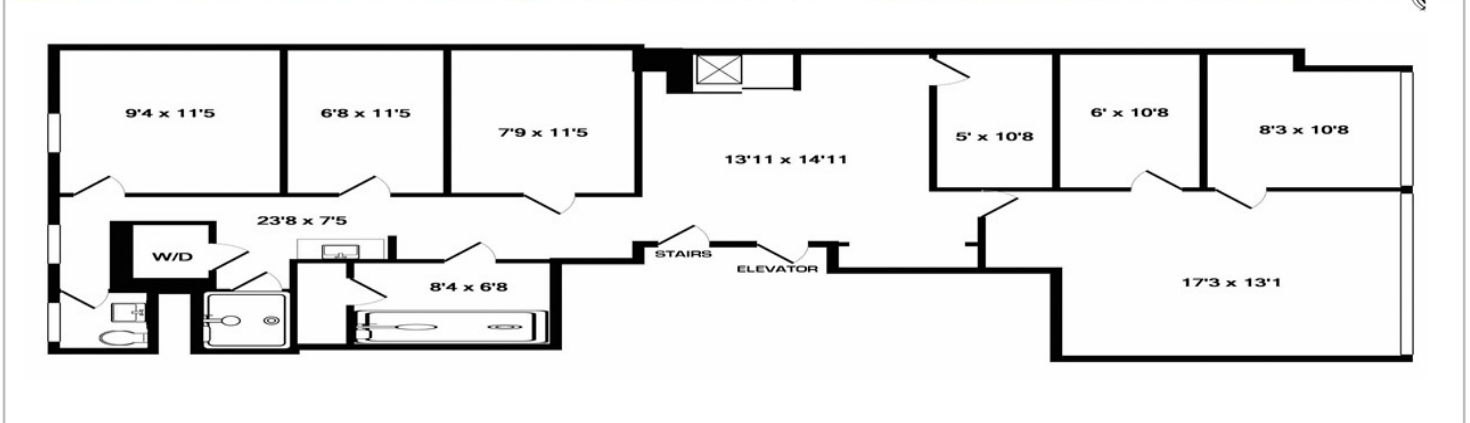
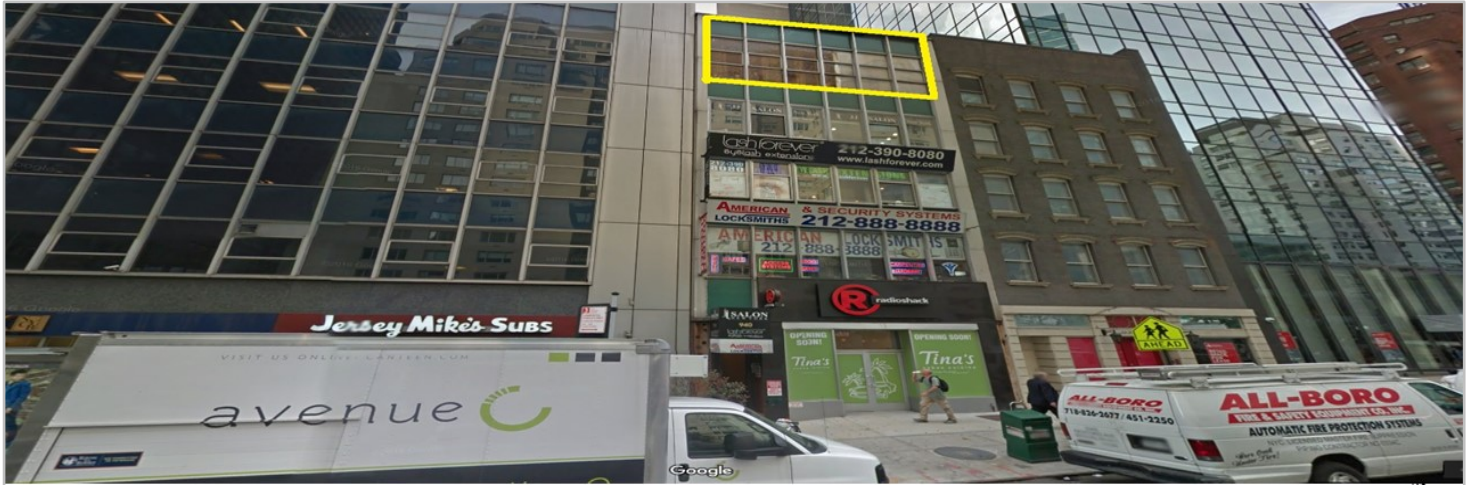


**EXCLUSIVE – Retail or Professional Space for Lease**

**940 3<sup>rd</sup> Avenue, New York, NY 10022 (between E 56<sup>th</sup> and E 57<sup>th</sup>)**



**Type:** *RETAIL or Professional*

**Unit Size:** ± 1,400 SF

**Price:** *Call for details*

**Co and Neighboring Tenants:** Lash Forever, JJ Salon, American Locksmiths, Tina's Cuban Cuisine, HSBC, Jersey Mike's Subs, Atlantic Bank, Duane Reade, Jonny Rocket's, Chase, Design Within Reach, P.J. Clarke's, Sleepy's, TD Bank

**Brief Description:** 5<sup>th</sup> floor available. Ideal space for tenants with a wide range of uses (retail, professional, etc.). Currently configured with a waiting room, multiple offices, conference room, break room, and bathroom. Elevator opens into space. Outstanding demographics!

**For More Information Contact:**

**Michael DiBella**

(516) 997-0100 ext. 319 – Office

(516) 864-6759 - cell

[mdibella@pliskinrealty.com](mailto:mdibella@pliskinrealty.com)

All information furnished is from sources deemed reliable, but no warranty or representation is made as to the accuracy thereof and same is submitted subject to errors, omissions, change of price, rental or other conditions, prior sale, lease or financing or withdrawal without notice.