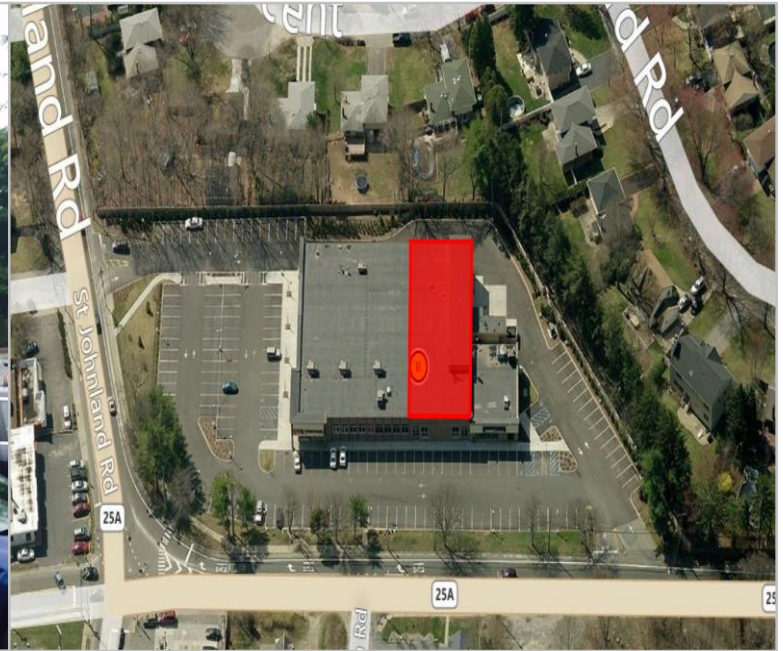


FOR LEASE

750 Route 25A, Kings Park, NY 11754



Type: Retail – All Uses Considered
Unit Size: ±7,500 SF
Rent: \$20.00 PSF
Co-Tenants: CVS Pharmacy, Capital One Bank
Neighboring-Tenants: Bank of America

±7,500 SF located at the intersection of Route 25a & St. Johnland Road. Recently developed building. Ample onsite parking. Strong local demographics. All uses considered. Call for details.

For More Information Contact:

Christopher Wierzbicki
(516) 997-0100 ext. 312 – Office
(516) 987-8355 – Mobile
christopher@pliskinrealty.com

Jeffrey Pliskin
(516) 997-0100 – Office
jpliskin@pliskinrealty.com