

Available for Lease

6137 Jericho Turnpike, Commack, NY 11725



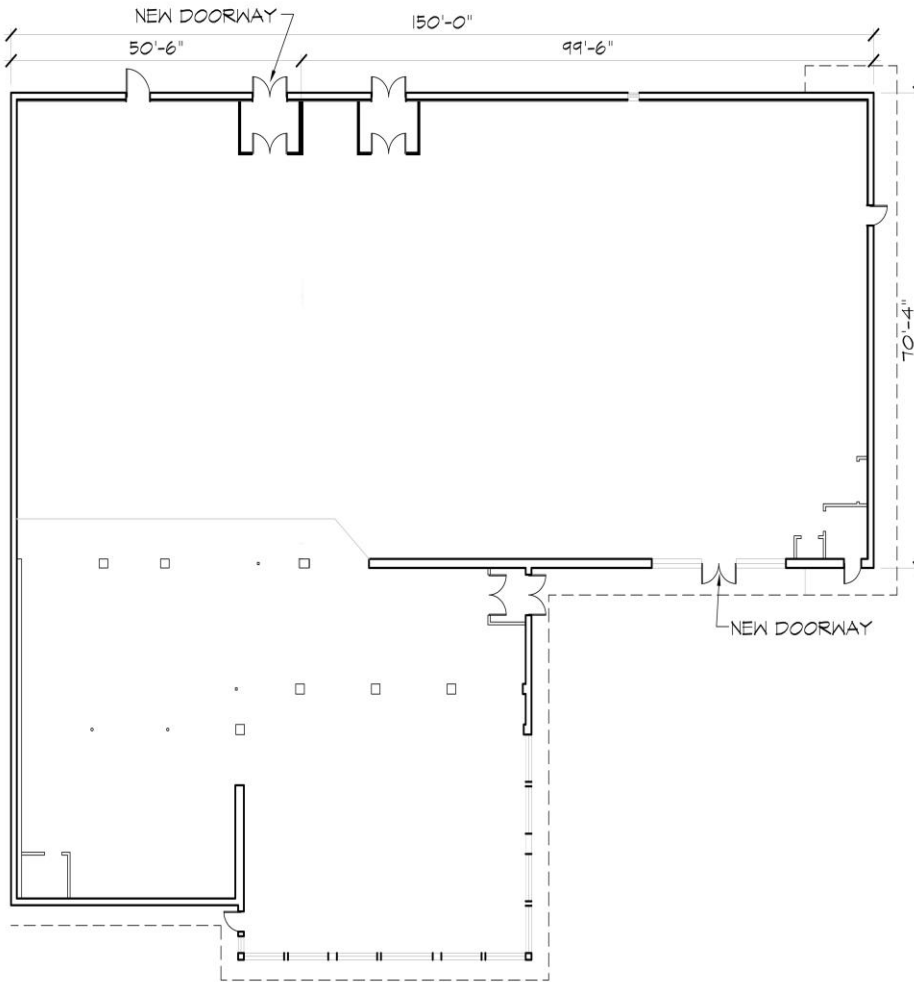
Type: Retail – Medical/Restaurant/Office
Unit Size: ± 15,500 SF (Divisible)
Lot Size: 1.70 Acres
Price: Call For Details
Area Tenants: Advance Auto Parts, New York Sports Club, Dick's Sporting Goods, Home Depot, Modell's, TJ Maxx, Subway,

For More Information Contact:

Christopher Wierzbicki
(516) 997-0100 ext. 312 – Office
(516) 987-8355 – Mobile
christopher@pliskinrealty.com

± 15,500 SF freestanding building available on Jericho Turnpike in Commack. Will divide. Ample parking of approximately 133 spaces. Average Daily Traffic of 41,000 vehicles. Call for details.

Marvin Hartman
(516) 997-0100 – Office
mhartman@pliskinrealty.com



FLOOR PLAN
 1/16" = 1'-0"

DRAWING		REVISED	
PROPOSED CONDITIONS			
BLOCK	XXX	ZONE	XXX
LOT	XXX	MAP	XXX
VASSALOTTI ASSOCIATES ARCHITECTS, L.L.P. <small>40 FOWERHOUSE BLDG., ROSELIN HEIGHTS, NY 11577</small>			
J & K INC. 61ST JERICHO TPKE. COMMACK, N.Y.			
LOCATION			
DWN BY	DN	CHK. BY	AD
SCALE	AS NOTED		
DATE	5/17/2014	DWG. NO.	12-0063
DWG. NO.	1 OF 1		