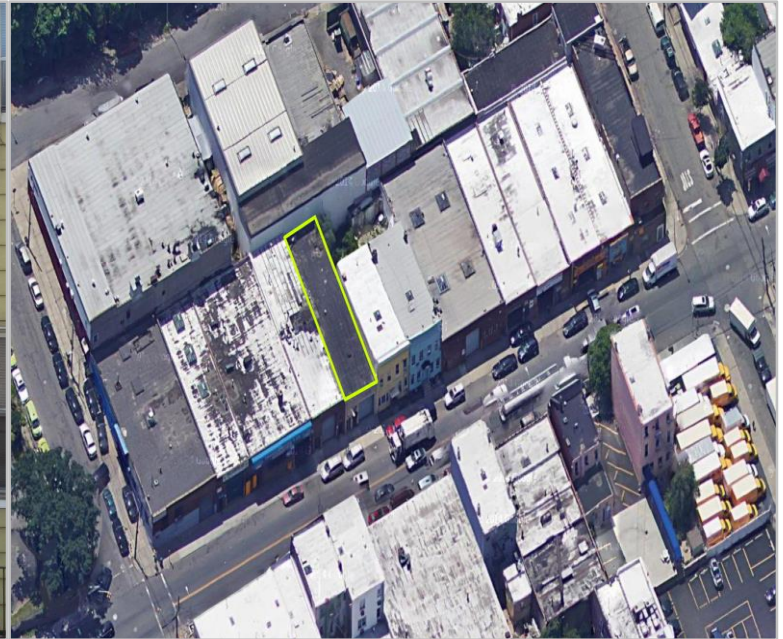


**FOR SALE**

**3226 Greenpoint Avenue, Long Island City, NY 11101**



**Type:** Industrial  
**Unit Size:** ±2,500 SF  
**Dimensions:** 25' x 100'  
**Sales Price:** Call for details

±2,500 SF plus ±750 SF Mezzanine Storage, located on Greenpoint Avenue in Long Island City. Seconds from Long Island Expressway and Brooklyn Queens Expressway.

- One Large Drive-In Door
- 14' Ceilings
- 750 SF of Office Space with Kitchen and Bathroom with Shower.
- 750 SF of Mezzanine Storage

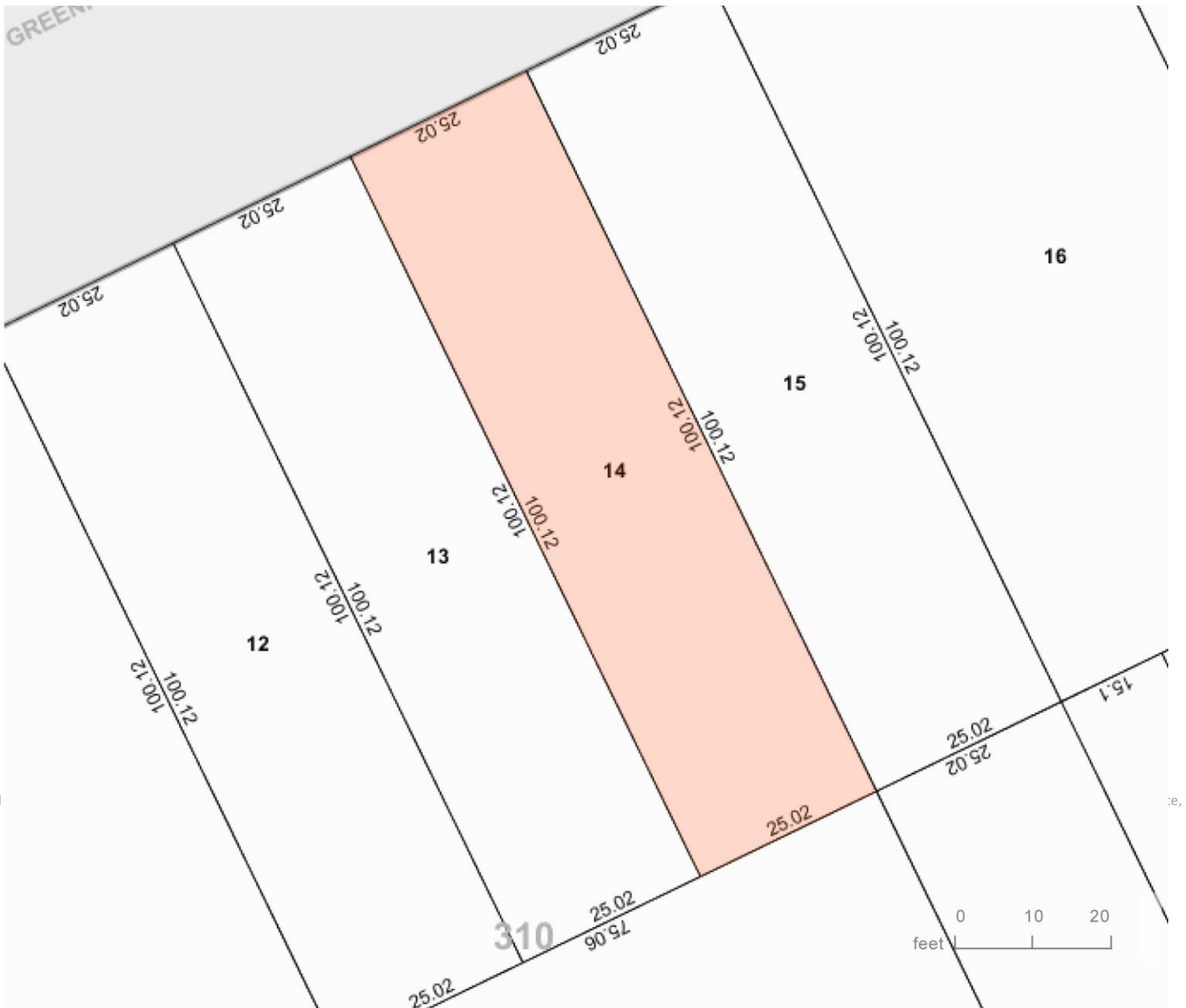
**For More Information Contact:**

**Diane Friedman**  
(516) 997-0100 x 317 - Office  
(516) 297-5558 - Mobile  
dfriedman@pliskinrealty.com

All information furnished is from sources deemed reliable, but no warranty or representation is made as to the accuracy thereof and same is submitted subject to errors, omissions, change of price, rental or other conditions, prior sale, lease or financing or withdrawal without notice.



**PLISKIN  
REALTY AND  
DEVELOPMENT, INC.**  
*Knowledge. Service. Integrity.*



591 Stewart Avenue • Suite 100 • Garden City, NY 11530

516-997-0100 • web: [www.PliskinRealty.com](http://www.PliskinRealty.com) • E-Mail: [jpliskin@pliskinrealty.com](mailto:jpliskin@pliskinrealty.com)