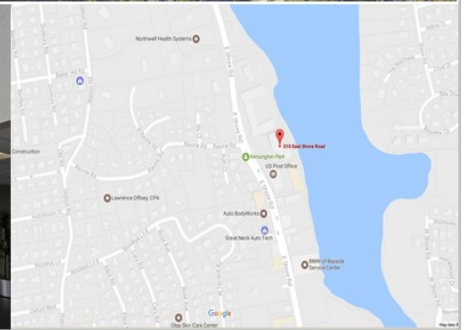
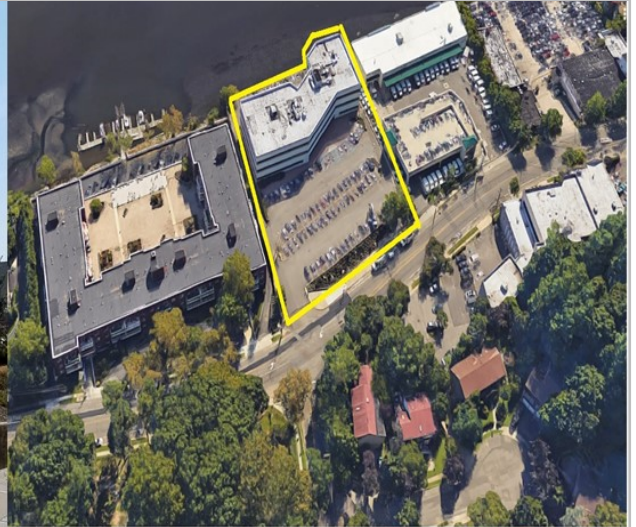


EXCLUSIVE – Medical / Dental / Professional Spaces for Lease
FULL COMMISSION TO LEASING BROKER
310 East Shore Road, Great Neck NY 11023



Type: *Medical / Dental / Professional OFFICE SPACES*
2 Available: *± 1550 SF (w/ water views!), and ± 500 SF*

Building Size: *± 50,000 SF*
Asking: *Call for details*

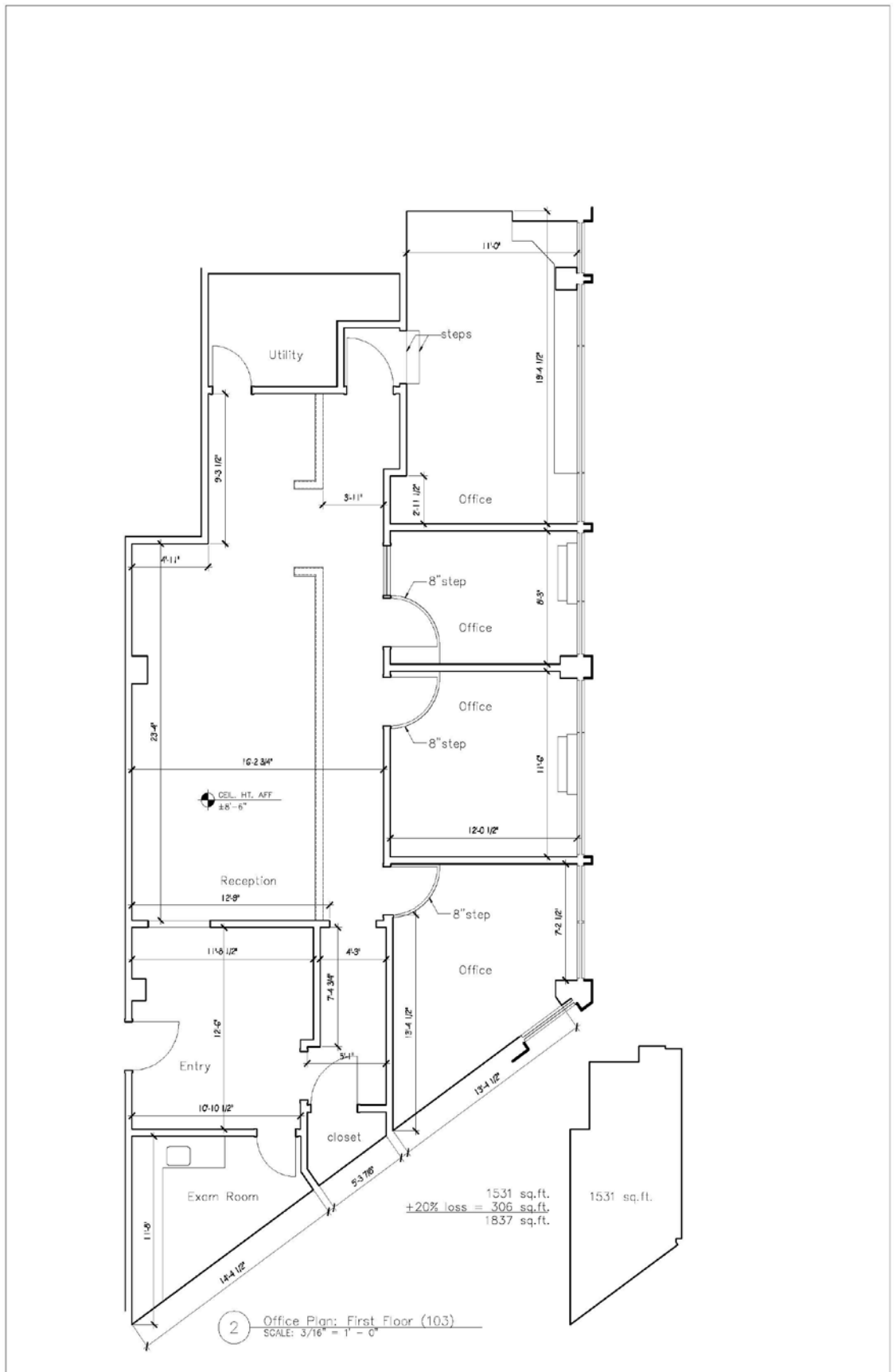
PARKING: *Ample surface and covered parking!*

For More Information Contact:
Michael DiBella

(516) 997-0100 ext. 319 – Office
(516) 864-6759 cell
mdibella@pliskinrealty.com

Brief Description: This 3 story office building is conveniently located in Great Neck and **boasts beautiful water views!** The property features covered and surface parking, an inviting lobby and lovely water views. Located less than a mile north of Northern Blvd. Outstanding location!

All information furnished is from sources deemed reliable, but no warranty or representation is made as to the accuracy thereof and same is submitted subject to errors, omissions, change of price, rental or other conditions, prior sale, lease or financing or withdrawal without notice.



310 East Shore Road
Great Neck, NY 11023

6/5/2017