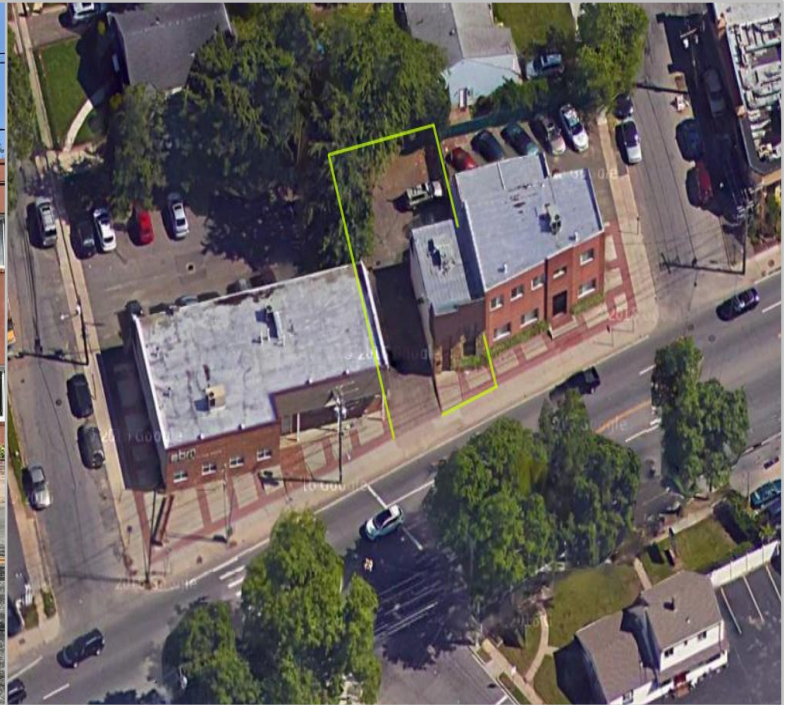




**PLISKIN  
REALTY AND  
DEVELOPMENT, INC.**  
*Knowledge. Service. Integrity.*

**FOR SALE**

**835 Old Country Road, Westbury 11590**



**Type:** Medical/Professional  
**Building Size:** 2 floors – 1,500 SF  
**Lot Size:** 0.086 Acres  
**Zoning:** Business A (B-A) – Office Building  
**Year Built:** 1978  
**R.E. Tax:** \$13,903

± 1,500 SF office/medical building on Old Country Road. Full interior renovation! Great user building. Easy access to parkways. Call for additional information.

**For More Information Contact:**

**Christopher Wierzbicki**  
Licensed Real Estate Salesperson  
(516) 997-0100 ext. 312 – Office  
(516) 987-8355 – Mobile  
christopher@pliskinrealty.com

All information furnished is from sources deemed reliable, but no warranty or representation is made as to the accuracy thereof and same is submitted subject to errors, omissions, change of price, rental or other conditions, prior sale, lease or financing or withdrawal without notice.

591 Stewart Avenue • Suite 100 • Garden City, NY 11530  
516-997-0100 • web: [www.PliskinRealty.com](http://www.PliskinRealty.com) • E-Mail: [jpliskin@pliskinrealty.com](mailto:jpliskin@pliskinrealty.com)