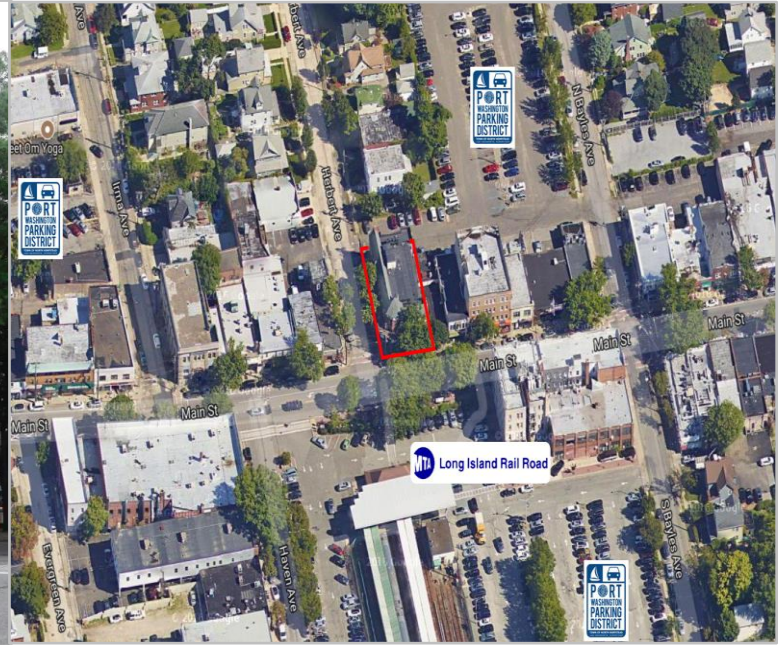


FOR LEASE

63-65 Main Street, Port Washington, NY



Type: Retail – All Uses Considered
Unit Sizes: ±2,600 SF - End Cap
Rent: Call for Details
Possession: Arranged
Area Tenants: Dunkin' Donuts, CVS, Bank of America, Bareburger, AT&T, Verizon, Starbucks, Massage Envy, T-Mobile

For More Information Contact:

Christopher Wierzbicki
Licensed Real Estate Salesperson
(516) 997-0100 ext. 312 – Office
(516) 987-8355 – Mobile
christopher@pliskinrealty.com

±2,600 SF of retail available in a recently renovated mixed use building directly across from Long Island Rail Road. Located on the corner of Main Street & Herbert Avenue. Recently renovated building. Strong local demographics. All uses considered. Call for details.

All information furnished is from sources deemed reliable, but no warranty or representation is made as to the accuracy thereof and same is submitted subject to errors, omissions, change of price, rental or other conditions, prior sale, lease or financing or withdrawal without notice.